



NEWSLETTER



National Pet Preparedness Month!

This month, prepare your pets for any emergency or disaster.

JUNE

Be Prepared!

PETS ARE IMPORTANT FAMILY MEMBERS, AND NEED TO BE INCLUDED IN YOUR FAMILY'S EMERGENCY PLAN!

DON'T FORGET TO INTEGRATE YOUR FURRY (OR NOT-SO-FURRY) FAMILY MEMBERS AS YOU CREATE YOUR EMERGENCY PLAN AND BUILD EMERGENCY KIT.



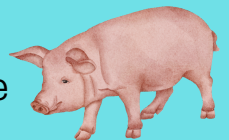
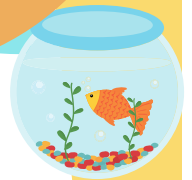
MAKE A PLAN



BUILD AN EMERGENCY KIT



STAY INFORMED



- Ensure all animals have some form of identification.
- Determine evacuation sites in advance. If possible, evacuate animals early.
- Identify vehicles and trailers needed for transporting and supporting each animal. Coordinate with experienced handlers and drivers from your community.
- Train your horse or large animal to load into a trailer.
- Never turn your horse or livestock loose during a wildfire. You do not know how they will react and they could be dangerous to you or others.



Make A Plan!

THINGS TO INCLUDE IN YOUR PLAN:

- Have an evacuation plan for your pet. City of LA shelters allow pets to be co-located with owners. Be sure to have a kennel, carrier, etc.
- Plan with trusted neighbors, friends, or relatives to make sure they know the plan to evacuate your pets if you are unable to do so in an emergency.
- Have your pet microchipped. Make sure to keep your address and phone number up-to-date (including information for an emergency contact outside of your immediate area).
- Contact your local animal services facility to get additional advice and information if you're unsure of next steps during an emergency.

Build Your Kit!

ITEMS TO INCLUDE IN AN EMERGENCY KIT FOR YOUR PET:



- ✓ First Aid Kit
- ✓ Food
- ✓ Water
- ✓ Toys
- ✓ A picture of you and your pet
- ✓ Copy of license/vaccination records
- ✓ Medicine
- ✓ Sanitation needs
- ✓ Crate / travel bag
- ✓ Grooming items
- ✓ Collar with ID tag & harness / leash

Stay Informed!

STAY INFORMED ABOUT EMERGENCY CONDITIONS:

1 PAY ATTENTION TO EMERGENCY ALERTS. SIGN UP FOR NOTIFYLA, THE CITY OF LA'S EMERGENCY NOTIFICATION SYSTEM.

2 LISTEN TO LOCAL OFFICIALS AND EMERGENCY RESPONDERS WHEN TOLD TO EVACUATE OR SHELTER IN PLACE.

3 ALWAYS BRING SMALL PETS INDOORS AT THE FIRST SIGN OF A STORM OR DISASTER.



LEARN MORE AT [LA ANIMAL SERVICES](#)